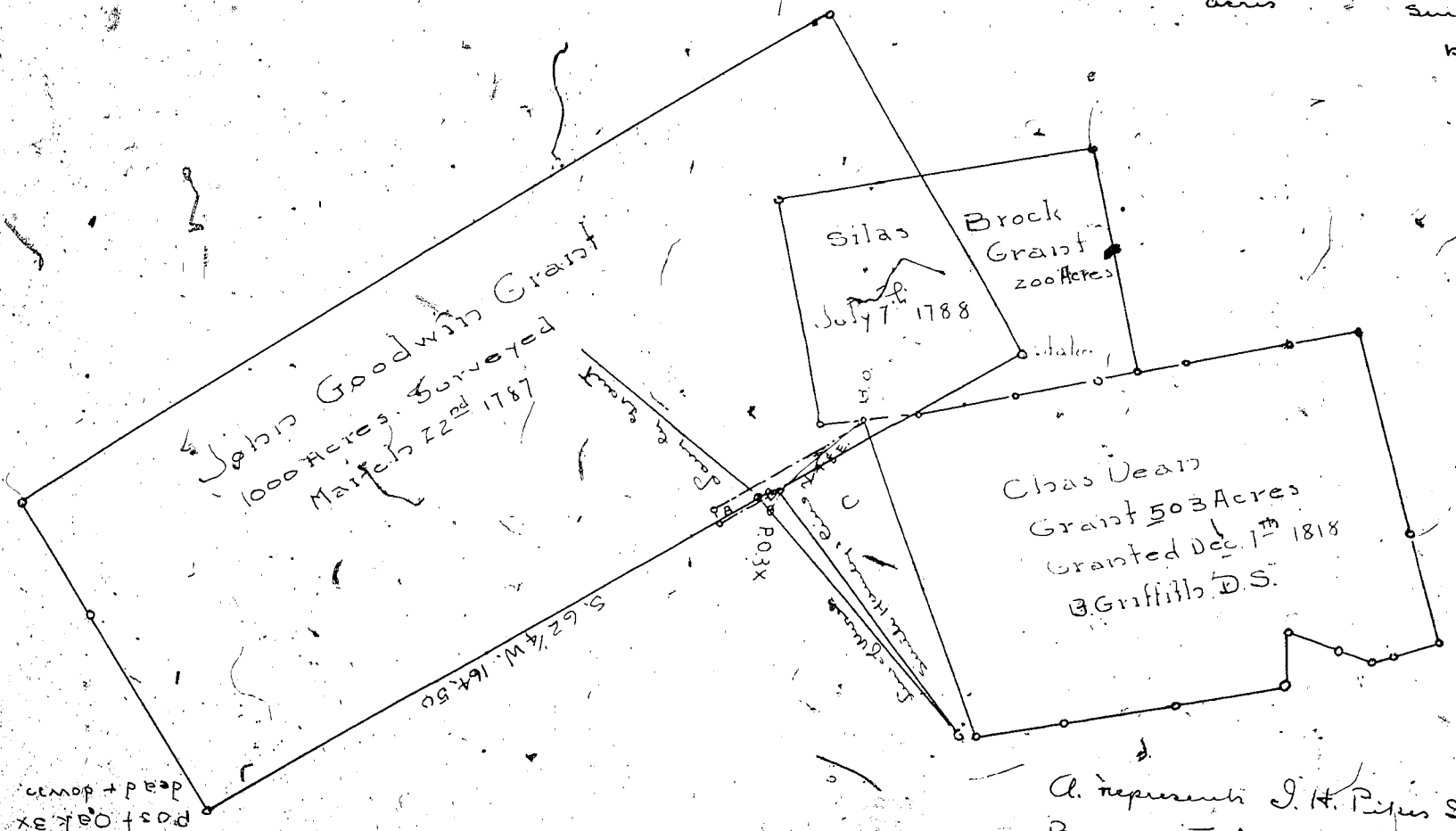


Laid down by a survey of
20 chs. per inch.

C. Represents 55 acres sold to Edward
Wheeler by Thos. J. Dean including within
the limits of Wm. Samply Grant for 500
acres
Surveyed Nov. 21st 1796
by Jas. Kelly W. D.S.



A. represents J. H. Piles Grant
B represents the portion in J. H. Piles grant not covered by
older grants and deeds.
The line running from the Post Oak 3x N. 48. E. 22.80 to
Black oak stump near old road is the line line of
a deed from Thos. J. Dean to Edward Wheeler
This also is a correct diagram of a survey made
between Edward Wheeler & J. H. Piles
Dec. 8th 1858
Jas. R. Davidson D.S.